

MAC5
French Design



STEAM IRONING PRESS

MAC5 LTD
77, Strovolou Avenue (Strovolos Center), 2018, Nicosia, Cyprus
E-mail: info@mac-5.com

www.mac-5.com

www.kiy-v.ua

Through the recent acquisition carried out, MAC5 continues its positive trend of development by integrating the best performing and the most worldwide known range of Steam Ironing Presses by enriching itself in this way with innovative technological processes in addition to new and potential markets.

MAC5 confirms its tradition and the approach of company which is focused mainly on providing only the best to its customers: the “French Design” Steam Ironing Press range indeed represents the result of numerous years of research and development, involving continuous improvements of the production processes, an unrestrainable selection of components and materials used in the process ... and last but not least remain the confirmation and appreciation coming from all operators of this industry that have tested and distributed these products during the last years.

MAC5 consolidates and empowers its identity as a specialist in the household steam ironing and cleaning industry, offering one of the widest range of products entirely implemented on its own in the modern, well equipped and verticalized factory. These features are often identified and appreciated by the most important distributors and importers with which the Company has established a tight business relationship offering its know-how, the after sales service support as well as the experience acquired during the last 30 years.

The existence of MAC5 products in different countries of the world shows the importance of the decisions carried out, the reliability of the offered products/services as well as the skills of the team devoted to various activities.

Driven by a positive spirit and by enthusiasm, MAC5 is always ready to face new challenges, developing innovative ideas and products, reaching new markets with the aim, to attain always new and more ambitious goals.





CAPT System: Limestone Capture System



What will cause a steam generator to calcify?

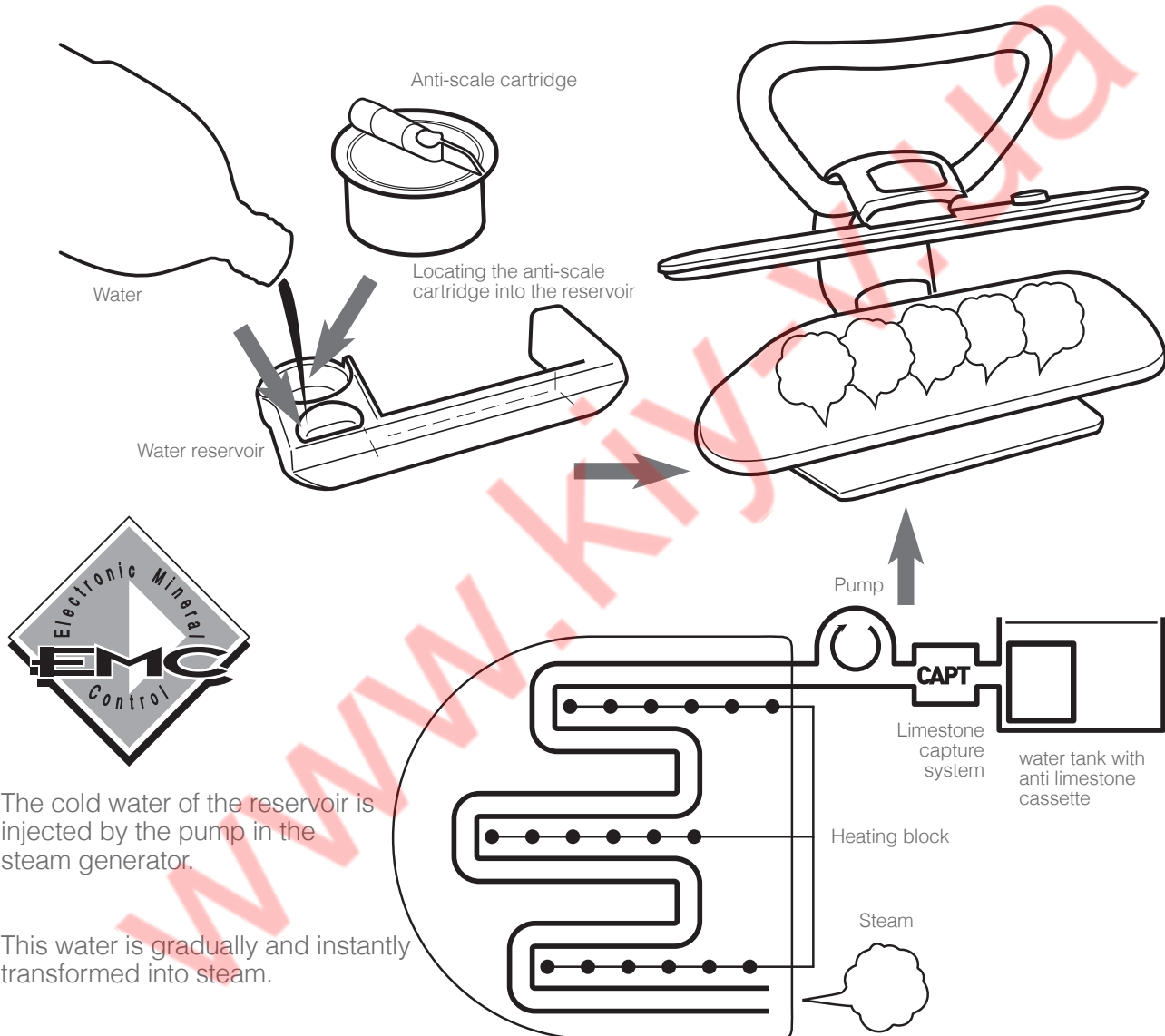
Depending on the region, water has a certain degree of limestone.

When there's presence of limestone in the water during the heating process, minerals crystallize and create deposits. You already have observed this phenomenon in your kettle for example.

Over time, calcium deposits, accumulate and forms a layer on the bottom of your device which deactivates its proper functioning: this scaling leads to heating problems and furthermore can quickly lead to device failure.

Limestone is the number 1 enemy of your appliance.

CAPT: the unique system of active uptake limestone



The cold water of the reservoir is injected by the pump in the steam generator.

This water is gradually and instantly transformed into steam.

Each MAC5 Steam Press has a limestone capture system. The water in the tank is filtered by a demineralization cassette before being heated and converted into steam. Thus, all minerals are captured by the tape and are not able to damage your steam generator. In addition, when the cassette is no more effective the user is warned that he must change it.

The EMC system (Electronic Mineral Control) is now the most effective anti-scale system which allows MAC5 to be the only system to offer a 6 year warranty against scaling for your steam press.

A cassette is included in each steam generator package, which corresponds to about 3 months of ironing (for an average rate of limestone and a weekly ironing average duration of 2-3 hours).

MAC5

Steam ironing press

SP 8000

with extra iron, spray and finishing table



EASY IRONING

- in a sitted position
- No more backache
- Tired legs are just a bad souvenir

EASY TRANSPORT and STORING



The steam press has a modern design, with a big ironing surface (about 10 times the surface of a traditional iron). With the power of steam, ironing is effortless and fast, giving you perfect ironing results.

- Steam ready in 3 minutes
- Steam output 200 g/min
- Electrical safety: if the press is plugged in and closed for about 10 seconds, the electrical heating is automatically cut off
- Removable water reservoir with level indicator. Capacity 0,75 litre
- Can be re-filled at any time giving uninterrupted ironing
- Type of water: tap water or demineralised water
- Anti-scale cartridge
- Heating plate temperature pilot light
- Adjustable temperature thermostat
- Non-stick coating heating plate
- Tilted moulded aluminium table : 68 x 25 cm
- Tilted table for better viewing and easier layout of the linen
- Automatic opening
- Wide-angle opening for an easier setting of bulky pieces of linen
- Locking latch for transport
- Pressing cushion

Specifications

Automatic pressure	45 kg (33 g/cm2)
Power 220-240 Vac	2200 W
Dimensions	68 x 58 x 27 cm
Dimensions packed	72 x 36 x 60 cm
Weight (product)	11,6 kg
Total weight packed	15,7 kg
Quantity of products per pallet	11
Unit per box	1
Reference	SP8000



Exclusive: with extra iron and real water spray

- For finishing works and ironing details which are not so easy with the press - for instance cuffs, flounces and gathers, small baby clothes...



Detachable spray

- To remove creases that require the linen to be dampened again
- To remove a crease inadvertently made when ironing, for instance on a sleeve or a pair of trousers without pleat...



Removable water reservoir

Anti-scale cartridge



Exclusive: with finishing table

- The finishing table provides a significantly increased ironing surface and makes the folding of the linen much easier, especially for the large pieces.
- Linen is folded out of the heating space: risks of burning are avoided since the hands are away from the heating plate.



MAC5

Steam ironing press

SP 4400



EASY IRONING

- No more backache
- Tired legs are just a bad souvenir

EASY TRANSPORT and STORING



The steam press has a modern design, with a big ironing surface (about 10 times the surface of a traditional iron). With the power of steam, ironing is effortless and fast, giving you perfect ironing results.

- Steam ready in 3 minutes
- Steam output 120 g/min - Booster function 200 g/min
- Electrical safety: if the press plugged in and closed about 10 seconds, the electrical heating is automatically cut off
- Removable water reservoir with level indicator. Capacity 0,75 litre
- Can be re-filled at any time giving uninterrupted ironing
- Type of water: tap water or demineralised water
- Anti-scale cartridge
- **Automatic protection against scale with indicator (EMC)**
- Heating plate temperature pilot light
- Adjustable temperature thermostat
- Anodized heating plate
- Tilted moulded aluminium table for all sizes of garment. : 68 x 25 cm
- Tilted table for better viewing and easier layout of the linen
- Automatic opening
- Wide-angle opening for an easier setting of bulky pieces of linen
- Locking latch for transport
- Pressing cushion

Specifications

Automatic pressure	45 kg (33 g/cm2)
Power 220-240 Vac	2200 W
Dimensions	68 x 58 x 27 cm
Dimensions packed	72 x 36 x 60 cm
Weight (product)	11,1 kg
Total weight packed	15,1 kg
Quantity of products per pallet	11
Unit per box	1
Reference	SP 4400

Finishing table for steam ironing presses

The finishing table provides a significantly increased ironing surface (plus 65 %) and makes the folding of the linen much easier, especially for the large pieces. Lift the table upwards and you can fold your linen. Putting it back into ironing position is as easy.



Linen is folded out of the heating space:

risks of burning are avoided since the hands are away from the heating plate.

Storing away the ironing press:

Your press can be stored away easily if the finishing table is folded back under the press.

The press can be stored anywhere and will not require more space than usual.

Easy to remove:

If, for any reason, you do not fold your shirts but prefer to put them on hangers, the finishing table can easily be unclipped from the press.

Water reservoir can still be filled easily.

When finishing table is not in use, fill reservoir in place. When finishing table is in use, remove reservoir, fill and replace.

The finishing table makes the folding of the linen much easier.



Removable water reservoir

Anti-scale cartridge



Dimensions of the finishing table: 50 x 15 cm

MAC5

Steam ironing press

SP 4300

The steam press has a modern design, with a big ironing surface (about 10 times the surface of a traditional iron).



EASY IRONING in a sitted position
 - No more backache
 - Tired legs are just a bad souvenir

EASY TRANSPORT
 and **STORING**



SP 4300 Technical Information

- Steam ready in 3 minutes
- Steam output 120 g/min - Booster function 200 g/min
- Electrical safety: if the press plugged in and closed about 10 seconds, the electrical heating is automatically cut off
- Removable water reservoir with level indicator. Capacity 0,75 litre
- Can be re-filled at any time giving uninterrupted ironing
- Type of water: tap water or demineralised water
- Anti-scale cartridge
- On/Off switch
- Dry / Steam ironing selection switch
- Heating plate temperature pilot light
- Adjustable temperature thermostat
- Anodized heating plate
- Tilted moulded aluminium table : 68 x 25 cm
- Tilted table for better viewing and easier layout of the linen
- Automatic opening
- Wide-angle opening for an easier setting of bulky pieces of linen
- Locking latch for transport
- Pressing cushion

Specifications

Automatic pressure	45 kg (33 g/cm2)
Power 220-240 Vac	2200 W
Dimensions	68 x 58 x 27 cm
Dimensions packed	72 x 36 x 60 cm
Weight (product)	10,5 kg
Total weight packed	14,6 kg
Quantity of products per pallet	11
Unit per box	1
Reference	SP 4300

With the power of steam, ironing is effortless and fast, giving you perfect ironing results.

MAC5

Steam ironing press
SP 4150

SP 4150 Technical Information

Specifications

Automatic pressure	45 kg (33 g/cm ²)
Power 220-240 Vac	2200 W
Dimensions	68 x 58 x 27 cm
Dimensions packed	72 x 36 x 60 cm
Weight (product)	10,4 kg
Total weight packed	14,6 kg
Quantity of products per pallet	11
Unit per box	1
Reference	SP 4150

- Steam ready in 3 minutes
- Steam output 130 g/min
- Electrical safety: if the press plugged in and closed about 10 seconds, the electrical heating is automatically cut off
- Removable water reservoir with level indicator. Capacity 0,75 litre
- Can be re-filled at any time giving uninterrupted ironing
- Type of water: tap water or demineralised water
- Anti-scale cartridge
- On/Off switch
- Heating plate temperature pilot light
- Adjustable temperature thermostat
- Anodized heating plate
- Tilted moulded aluminium table : 68 x 25 cm
- Tilted table for better viewing and easier layout of the linen
- Automatic opening
- Wide-angle opening for an easier setting of bulky pieces of linen
- Locking latch for transport
- Pressing cushion



General information



Easy transport



Removable water reservoir



Anti-scale cartridge

MAC5

Steam ironing press
SP 2500

The steam press has a modern design, with a big ironing surface (about 10 times the surface of a traditional iron).



EASY IRONING in a sitted position
- No more backache
- Tired legs are just a bad souvenir

EASY TRANSPORT
and **STORING**



SP 2500 Technical Information

- Steam ready in 3 minutes
- Steam output 120 g/min - Booster function 200 g/min
- Electrical safety: if the press plugged in and closed about 10 seconds, the electrical heating is automatically cut off
- Removable water reservoir with level indicator. Capacity 0,75 litre
- Can be re-filled at any time giving uninterrupted ironing
- Type of water: tap water or demineralised water
- Anti-scale cartridge
- On/Off switch
- Dry / Steam ironing selection switch
- Heating plate temperature pilot light
- Adjustable temperature thermostat
- Anodized heating plate
- Tilted moulded aluminium table : 68 x 25 cm
- Tilted table for better viewing and easier layout of the linen.
- Automatic opening
- Wide-angle opening for an easier setting of bulky pieces of linen
- Locking latch for transport
- Pressing cushion

Specifications

Automatic pressure	45 kg (33 g/cm ²)
Power 220-240 Vac	2200 W
Dimensions	68 x 58 x 27 cm
Dimensions packed	72 x 36 x 60 cm
Weight (product)	9,9 kg
Total weight packed	14,3 kg
Quantity of products per pallet	11
Unit per box	1
Reference	SP 2500

With the power of steam, ironing is effortless and fast, giving you perfect ironing results.

MAC5

Steam ironing press

SP 2150

SP 2150 Technical Information

Specifications

Automatic pressure	45 kg (33 g/cm ²)
Power 220-240 Vac	2200 W
Dimensions	68 x 58 x 27 cm
Dimensions packed	72 x 36 x 60 cm
Weight (product)	9,8 kg
Total weight packed	14,2 kg
Quantity of products per pallet	11
Unit per box	1
Reference	SP 2150

- Steam ready in 3 minutes
- Steam output 120 g/min
- Electrical safety: if the press plugged in and closed about 10 seconds, the electrical heating is automatically cut off
- Removable water reservoir with level indicator. Capacity 0,75 litre
- Can be re-filled at any time giving uninterrupted ironing
- Type of water: tap water or demineralised water
- Anti-scale cartridge
- On/Off switch
- Heating plate temperature pilot light
- Adjustable temperature thermostat
- Anodized heating plate
- Tilted moulded aluminium table : 68 x 25 cm
- Tilted table for better viewing and easier layout of the linen
- Automatic opening
- Wide-angle opening for an easier setting of bulky pieces of linen
- Locking latch for transport
- Pressing cushion



General information



Easy transport



Removable water reservoir



Anti-scale cartridge

MAC5

Steam ironing press

SP 1900

The steam press has a modern design, with a big ironing surface (about 10 times the surface of a traditional iron).

With the power of steam, ironing is effortless and fast, giving you perfect ironing results.



Removable water reservoir

SP 1900 Technical Information

- Steam ready in 3 minutes
- Steam output 110 g/min
- Electrical safety: if the press plugged in and closed about 10 seconds, the electrical heating is automatically cut off
- Water reservoir with level indicator. Capacity 0,45 litre
- Can be re-filled at any time giving uninterrupted ironing
- Type of water: demineralised water
- On/Off switch
- Heating plate temperature pilot light
- Adjustable temperature thermostat
- Anodized heating plate
- Tilted moulded aluminium table : 68 x 25 cm
- Tilted table for better viewing and easier layout of the linen
- Automatic opening
- Wide-angle opening for an easier setting of bulky pieces of linen
- Locking latch for transport
- Pressing cushion

Specifications

Automatic pressure	45 kg (33 g/cm ²)
Power 220-240 Vac	2200 W
Dimensions	68 x 58 x 27 cm
Dimensions packed	72 x 36 x 60 cm
Weight (product)	9,5 kg
Total weight packed	13,8 kg
Quantity of products per pallet	11
Unit per box	1
Reference	SP 1900

MAC5

Ironing press

XP 900

XP 900 Technical Information

Specifications

Automatic pressure	45 kg (33 g/cm ²)
Power 220-240 Vac	1000 W
Dimensions	68 x 58 x 27 cm
Dimensions packed	72 x 36 x 60 cm
Weight (product)	8,3 kg
Total weight packed	12,7 kg
Quantity of products per pallet	11
Unit per box	1
Reference	XP 900

- Electrical safety: if the press plugged in and closed about 10 seconds, the electrical heating is automatically cut off
- On/Off switch
- Heating plate temperature pilot light
- Adjustable temperature thermostat
- Anodized heating plate
- Tilted moulded aluminium table: 68 x 25 cm
- Tilted table for better viewing and easier layout of the linen
- Automatic opening
- Wide-angle opening for an easier setting of bulky pieces of linen
- Locking latch for transport
- Pressing cushion



General information



EASY IRONING in a sitted position
 - No more backache
 - Tired legs are just a bad souvenir



EASY TRANSPORT
 and **STORING**

MAC5



BRAND	MAC5	MAC5	MAC5	MAC5
MODEL	SP8000	SP4400	SP4300	SP4150
Steam ready	3 minutes	3 minutes	3 minutes	3 minutes
Steam output / booster or spray function	120 g/min / 200 g/min	120 g/min / 200 g/min	120 g/min / 200 g/min	130 g/min
Steam output equivalent to	5 bars	5 bars	5 bars	4,5 bars
Electrical safety : if the press plugged in and closed about 10 seconds, the electrical heating is automatically cut off	•	•	•	•
Removable water container	capacity 0,75 litre	capacity 0,75 litre	capacity 0,75 litre	capacity 0,75 litre
Can be refilled any time giving uninterrupted ironing	•	•	•	•
Type of water	tap or demineralized	tap or demineralized	tap or demineralized	tap or demineralized
Anti-scale cartridge	•	•	•	•
Change of cartridge by visual control	change of colour	-	change of colour	change of colour
Automatic protection against scale with indicator (EMC)	-	•	-	-
Heating plate temperature pilot light	•	•	•	•
Adjustable temperature thermostat	•	•	•	•
Anodized heating plate	-	•	•	•
Tilted moulded aluminum table	68 x 25 cm	68 x 25 cm	68 x 25 cm	68 x 25 cm
Tilted table for better viewing and easier layout of the linen	•	•	•	•
Automatic opening	•	•	•	•
Wide-angle opening for an easier setting of bulky pieces of linen	•	•	•	•
Locking latch for transport	•	•	•	•
ON/OFF switch	•	•	•	•
Dry / steam ironing selection switch	-	•	•	-
Booster ON/OFF switch	-	•	•	-
Non-stick coating heating plate	•	-	-	-
Finishing table	•	•	-	-
Extra iron	•	-	-	-
Detachable spray	•	-	-	-
Automatic pressure	45 kg (33 g/cm ²)	45 kg (33 g/cm ²)	45 kg (33 g/cm ²)	45 kg (33 g/cm ²)
Dimensions press L x W x H (cm)	68 x 58 x 27	68 x 58 x 27	68 x 58 x 27	68 x 58 x 27
Dimensions packed L x W x H (cm)	72 x 36 x 60	72 x 36 x 60	72 x 36 x 60	72 x 36 x 60
Weight steam press	11,6 kg	11,1 kg	10,5 kg	10,4 kg
Total weight packed	15,7 kg	15,1 kg	14,6 kg	14,6 kg
Power at 220 - 240 Vac	2200 W	2200 W	2200 W	2200 W

MAC5



BRAND	MAC5	MAC5	MAC5	MAC5
MODEL	SP2500	SP2150	SP1900	XP900
Steam ready	3 minutes	3 minutes	3 minutes	-
Steam output / booster function	120 g/min / 200 g/min	120 g/min	110 g/min	-
Steam output equivalent to	5 bars	4,5 bars	4,5 bars	-
Electrical safety : if the press plugged in and closed about 10 seconds, the electrical heating is automatically cut off	•	•	•	•
Removable water container	capacity 0,75 litre	capacity 0,75 litre	capacity 0,45 litre	-
Can be refilled any time giving uninterrupted ironing	•	•	•	-
Type of water	tap or demineralized	tap or demineralized	demineralized	-
Anti-scale cartridge	•	•	-	-
Change of cartridge by visual control	change of colour	change of colour	-	-
Automatic protection against scale with indicator (EMC)	-	-	-	-
Heating plate temperature pilot light	•	•	•	•
Adjustable temperature thermostat	•	•	•	•
Anodized heating plate	•	•	•	•
Tilted moulded aluminum table	68 x 25 cm	68 x 25 cm	68 x 25 cm	68 x 25 cm
Tilted table for better viewing and easier layout of the linen	•	•	•	•
Automatic opening	•	•	•	•
Wide-angle opening for an easier setting of bulky pieces of linen	•	•	•	•
Locking latch for transport	•	•	•	•
ON/OFF switch	•	•	•	•
Dry / steam ironing selection switch	•	-	-	-
Booster ON/OFF switch	•	-	-	-
Non-stick coating heating plate	-	-	-	-
Finishing table	-	-	-	-
Extra iron	-	-	-	-
Detachable spray	-	-	-	-
Automatica pressure	45 kg (33 g/cm2)	45 kg (33 g/cm2)	45 kg (33 g/cm2)	45 kg (33 g/cm2)
Dimensions press L x W x H (cm)	68 x 58 x 27	68 x 58 x 27	68 x 58 x 27	68 x 58 x 27
Dimensions packed L x W x H (cm)	72 x 36 x 60	72 x 36 x 60	72 x 36 x 60	72 x 36 x 60
Weight steam press	9,9 kg	9,8 kg	9,5 kg	8,3 kg
Total weight packed	14,3 kg	14,2 kg	13,8 kg	12,7 kg
Power at 220 - 240 Vac	2200 W	2200 W	2200 W	1000 W

MAC5



French design Made in Europe

... the partnership with **VEK INDUSTRY** SRL, important and qualified manufacturer located nearby Timisoara (Romania), offers professional skills and long-lasting experience in this field.

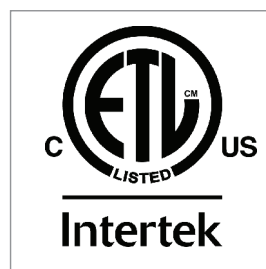
The modern factory of about 7500 covered sqm, built over 50.000 sqm of land, is situated in Ciacova (35 KM South towards Belgrade).

The strategic location allows making deliveries within 36-72 hours over all the European Countries as well as to Russia, Turkey, Ukraine etc.

The warehouse developed over a covered surface of 3000 sqm is capable to house, manage and move about 2000 Euro pallets. The modern computer system and software, together with the internal procedure of acceptance and quality controls (according to ISO-9000 international standards) ensure traceability of deliveries and checking the location of each stored component.

Production process has various departments, each one is dedicated to every single phase.

- Plastic injection: from 90 up to 400 Ton – Hot blade welding – Ultrasonic welding – Silk-screen printing
- Stainless steel deep-drawing – hot spot welding – TIG welding
- Metallic tubes automatic bending and welding
- Aluminum board plane stamping and hot spot welding
- Aluminum sole plate polishing and automatic assembling
- Silicone wire and steam/electric hoses production
- Assembly line, production quality control, pre-shipment audit control







www.killy.com.ua

www.mac-5.com